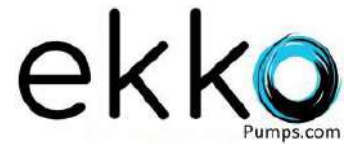


EKL SERIES  
Oil sealed rotary vane vacuum pump



**EKL - 800,1000 &1200**



**Single stage, oil re-circulating, air cooled, and direct driven.**

- . Compact desing - reliability & durability - easy to maintain and operate.
- . Simple installation - air cooled no water required.
- . Direct drive - C - face desing requires no belts
- . Integral exhaust filter - discharge air 99.9 % oil free
- . Quiet operation

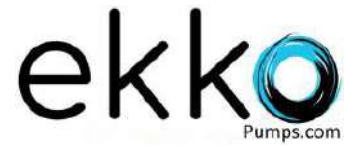
**Standard Equipment:** Composite vane, wire mesh inlet filter screen, vibration isolator, TEFC high efficiency motor, check valve, oil level sight glass, gas ballast valve, spin-on oil filter.

**Optional equipment:** Exhaust pressure gauge, oil level switch (port), temperature switch (port), heater and water cooler and float valve assembly for oil return.

**Specifications:**

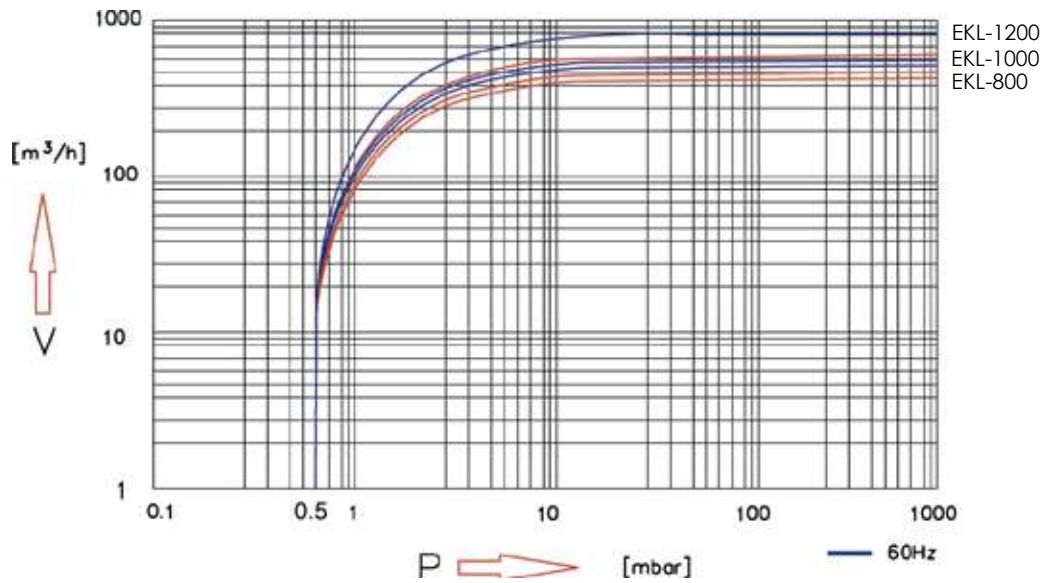
Models			800	1000	1200
Displacement	60Hz	m <sup>3</sup> /h	505	600	780
	50Hz		420	500	660
End Vacuum	F version	mbar	< 0.5	< 0.5	< 0.5
	L version		10	10	10
Motor ( 3Ph)	IEC(Kw )	60Hz	11.25	15	18.5
		50Hz	11.25	11.25	15
	NEMA(Hp)	60Hz	15	20	25
Revolution	RPM	60Hz	1160	1160	1160
		50Hz	980	980	980
Noise	dB(A)	60Hz	78	79	79
		50Hz	76	77	77
Operating Temp.	°C		80°C	82°C	80°C
Oil Capacity	Ltr		19	19	19
Connections	G(BSP) or NPT	Intake	3"	3"	3"
		Exhaust	3"	3"	3"

EKL SERIES  
Oil sealed rotary vane vacuum pump

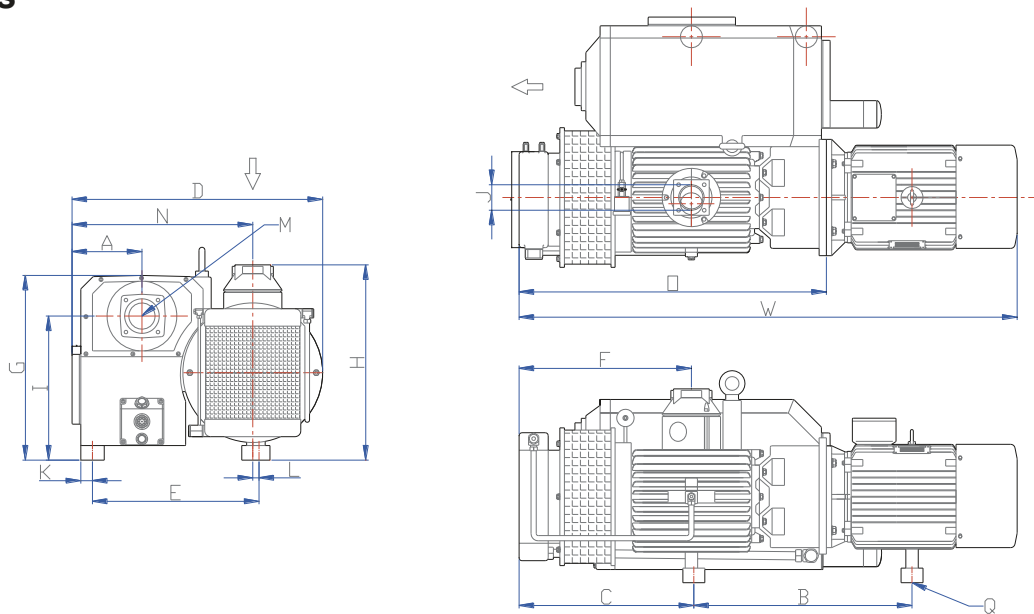


**EKL - 800, 1000 & 1200**

**Performance Curve**



**Dimensions**



DIMENSIONS	W	D	H	A	B	C	E	F	G	I	J	K	L	M	N	□	P	Q
EKL-1200	1725 (1682)				773 (731)	602		600								1060 (1062)	-	
EKL-1000	1591 (1511)	855	677	240	696 (676)	545	548	539	635	495	G3"	40	21.5	G3"	616	971	-	3x12
EKL-800	1525 (1445)				663 (643)	512		506								905	-	

\* The dimensions in ( ) are for 50Hz